



IMAGE COURTESY OF STEKLARNA HRASTNIK



**ALATI** Since 1986  
**STUHNE** s.r.l.

PREMIUM QUALITY MOULDS  
FOR GLASS INDUSTRY



**QUALITY DOES NOT HAPPEN BY ACCIDENT,  
IT MUST BE PLANNED.**

# QUALITY, FLEXIBILITY AND EXPERIENCE



In ALATI STUHNE, the focus is on making moulds for exceptional glass bottles.

We strive for perfection in each individual production stage in order to comply with high end-consumer product standards.

End-to-end service from design, production and rapid delivery to consulting and support during the production process is the fundamental reason for our position as market leader.

No matter what kind of glass container you produce - be it for food, water, non-alcoholic beverages, beer, wine, spirits, perfumery, cosmetics or pharmaceuticals - our quality, experience and flexibility allow us to serve the most demanding clients.

In order to respond to your needs and expectations in a reliable and sustainable manner, we continuously improve our knowledge and organization, together with substantial investments in advanced technology processes.

Today, the name ALATI STUHNE is synonymous with quality.

Our people, their knowledge, expertise and above all passion, are our key values and we do not accept compromises here.





# PRODUCTION PROCESS

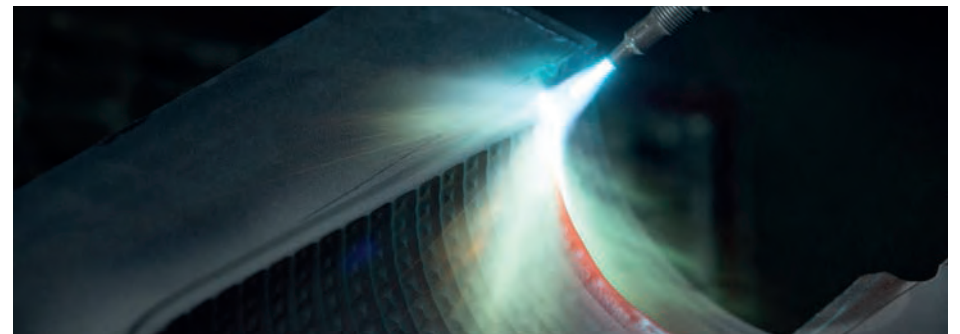
ALATI STUHNE offers a complete range of moulds, finishing equipment and all the accessories needed for the production of hollow glass containers.

Products are made from a wide variety of quality cast irons, bronze or dameron alloys, produced by reputable European foundries.

Together with various welding techniques, the company ensures that its moulds offer the highest performance and the maximum lifetime.

A modern machine park with cutting-edge technologies provides production capacities of 35,000 cavities (moulds and blanks) and 20,000 neck rings together with all the accompanying finishing equipment per year.

A dedicated NPD Fast Track machining line is incorporated within the regular production lines.





# MOULDS

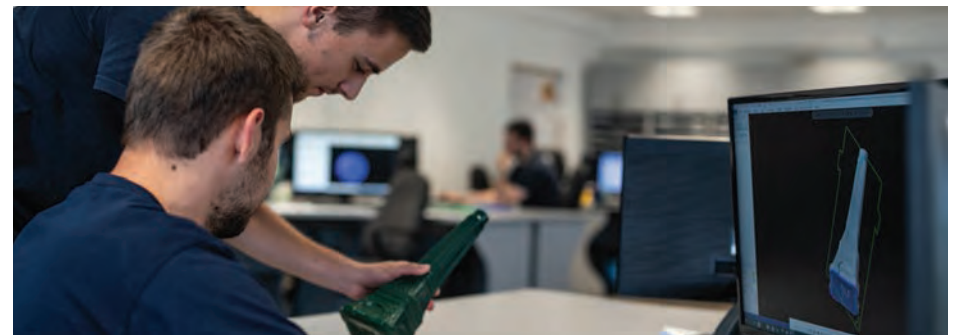
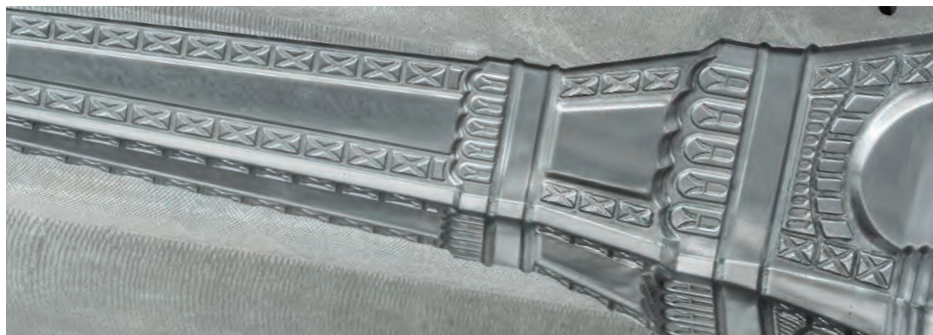
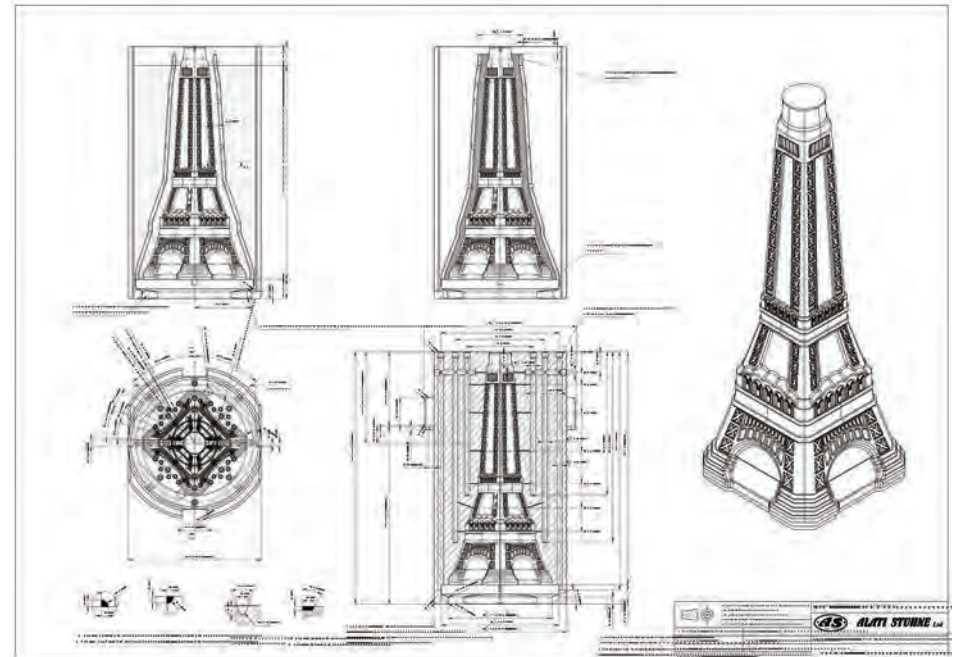
To meet all the client's expectations, the company supplies mould sets in a wide variety of shapes and sizes (from 5ml to 5L).

The engineering department provides technical documentation for new projects, from the client's idea or article design to the complete set of mould construction drawings.

With 3D scanning technology, reverse engineering and rapid prototyping they enable clients to see their final product before starting the mould production process.

When it comes to complex engraving, a plastic imprint of engraving will be sent to the client for approval before starting the mould production process.

The same imprint is later used as a reference for mould repair in the client's mould shop or for the production of a replacement set.











# THE ART OF ENGRAVING

At ALATI STUHNE, we are proud to help our customers build their premium brands and to differentiate their products through beautiful glass packaging.

Unsurpassed engraving expertise combined with the highest quality engraving machines and our own techniques enables ALATI STUHNE to create exquisite engravings.









AS.

OB002-10-01

AS.

OB002-10-02

AS.

OB002-10-02

AS.

OB002-10-01

# ACCESSORIES

ALATI STUHNE is producing all accessories required for the moulding process in house. Production of neck rings, guide plates, plungers, and all other finish equipment is part of its every day production as a part of mould set or as an independent order.







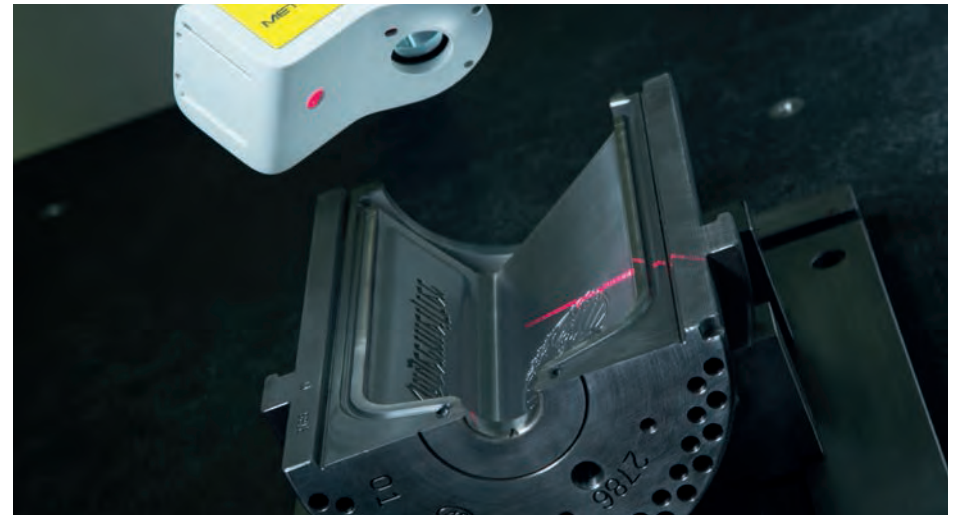
# QUALITY

ALATI STUHNE quality standards are under constant review.

The Quality Management System is monitored and adapted to the client's requirements and to quality requirements of the ISO 9001 standard.

Quality control is assured on the shop floor, where each step of the manufacturing process is inspected through carefully developed techniques and procedures on state of the art measuring systems.

Before shipping, moulds and accessories go through final control, allowing to clients a quick start with their own production.



## ALATI STUHNE Ltd

Valentinovo 8/2, 49218 Pregrada, Croatia

**Tel:** +385 49 301 900

**Fax:** +385 49 315 090

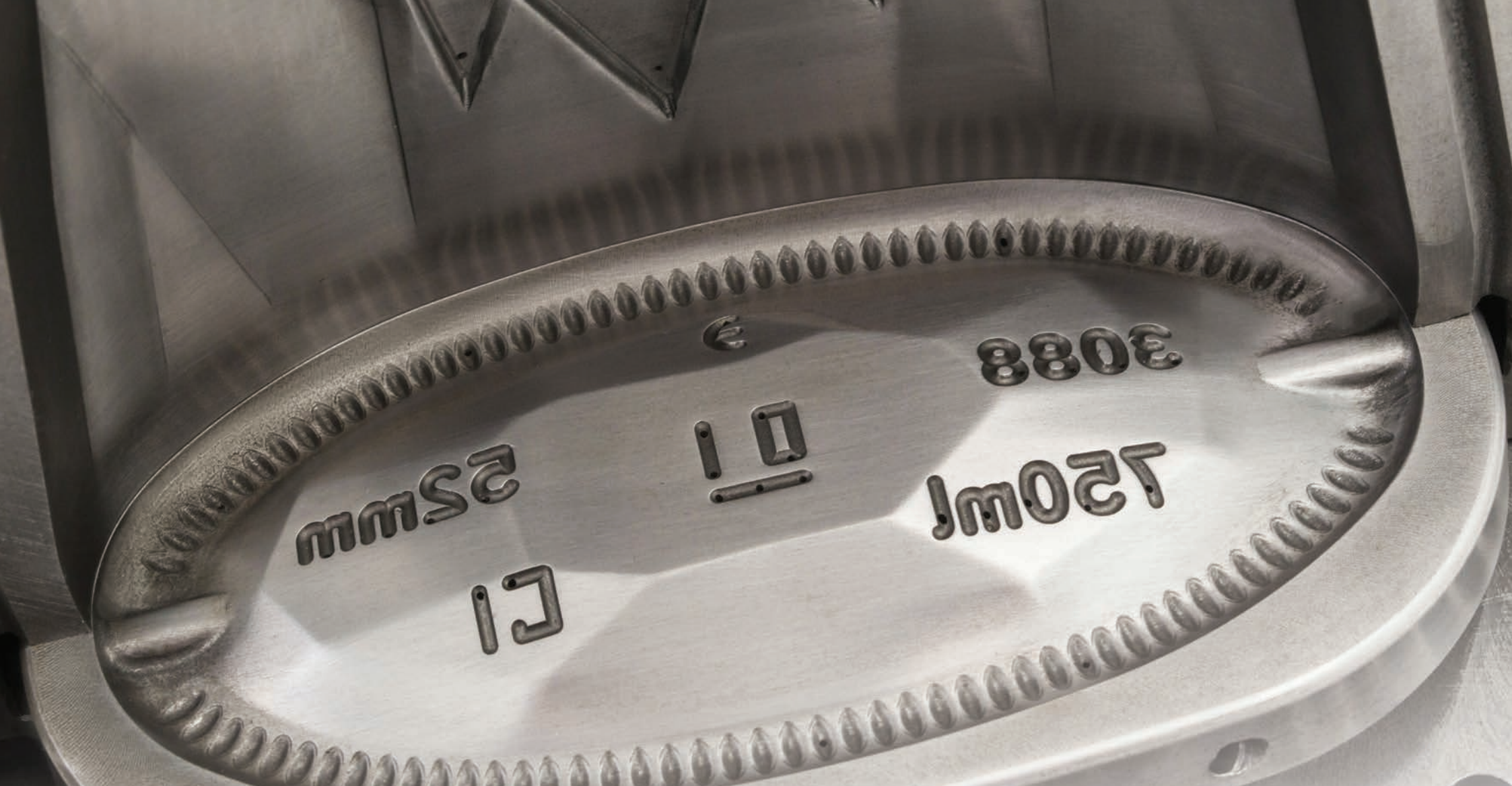
**E-mail:** [info@alati-stuhne.com](mailto:info@alati-stuhne.com)

**Web:** [www.alati-stuhne.com](http://www.alati-stuhne.com)





THE FUTURE  
WE ARE BUILDING IT TOGETHER



30 YEARS  
OF EXCELLENCE

